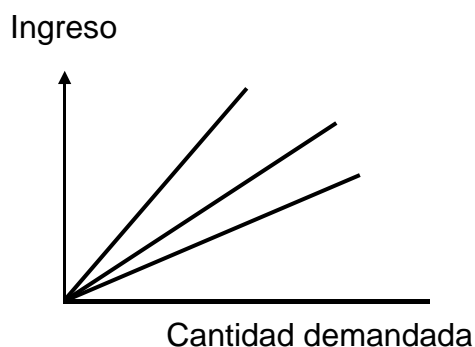


Elasticidad ingreso de la demanda

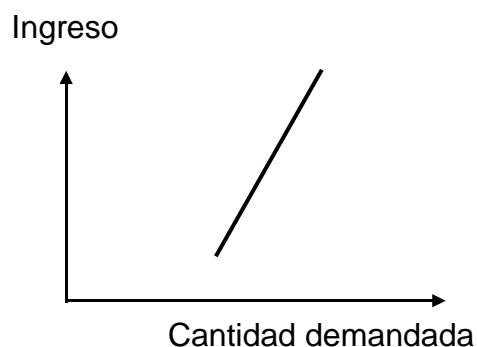
1 Elasticidad ingreso de la demanda (E_i) = $\frac{\text{Cambio porcentual en la cantidad demandada}}{\text{Cambio porcentual en el ingreso}}$

2 Bienes normales: $E_i > 0$

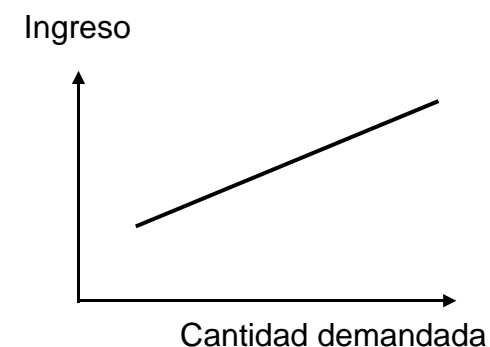
21 $E_i = 1$



22 Necesidad: $0 < E_i < 1$

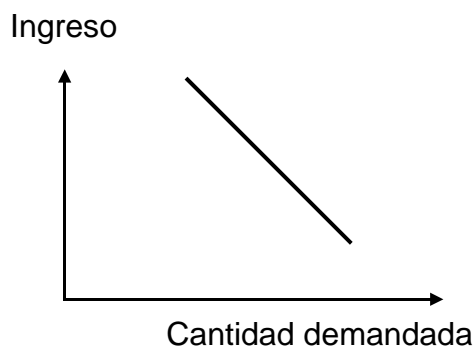


23 Lujo: $E_i > 1$

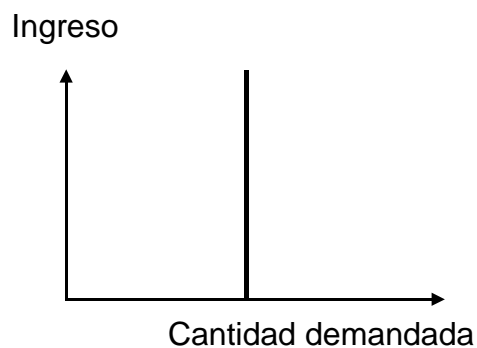


3 Casos especiales

31 Bien inferior ($E_i < 0$)



32 $E_i = 0$



33 $E_i = \text{infinito}$

