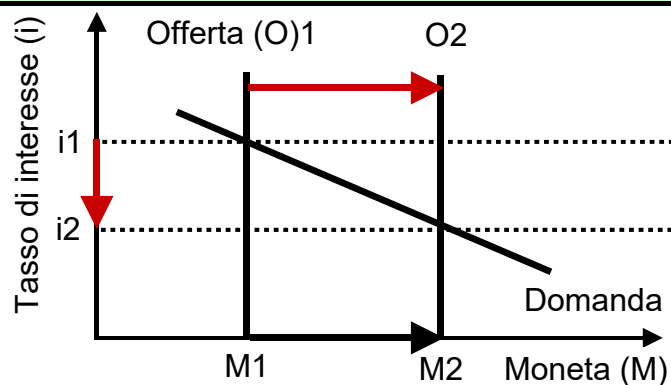


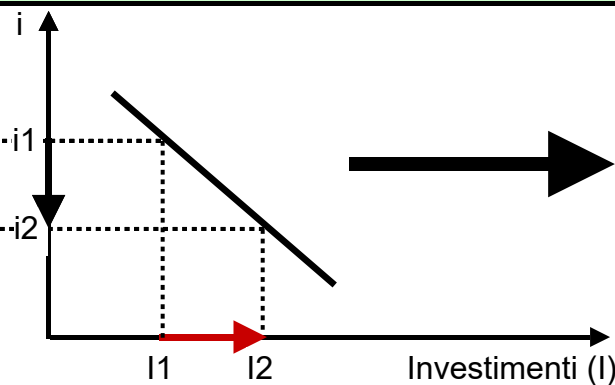
# Meccanismo di trasmissione della politica monetaria

## 1 Caso di recessione (DA = Domanda aggregata)

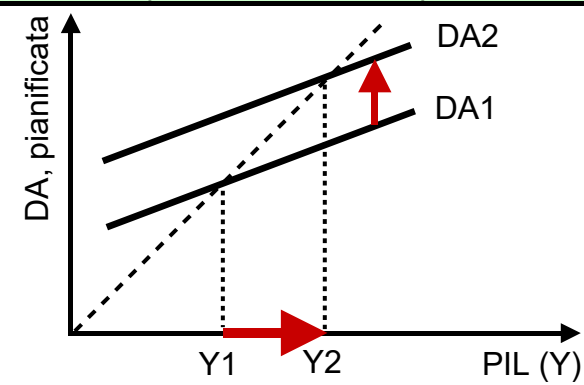
### 11 Mercato monetario



### 12 Investimenti

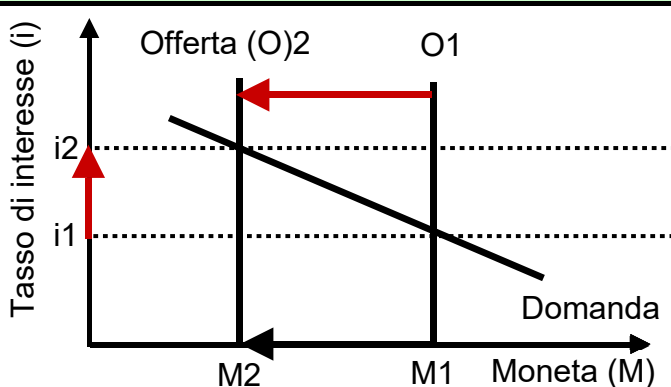


### 13 DA (= C+I+G+X-M)

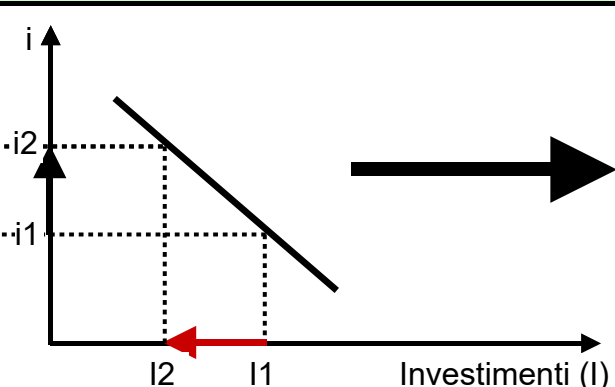


## 2 Caso di picco (DA = Domanda aggregata)

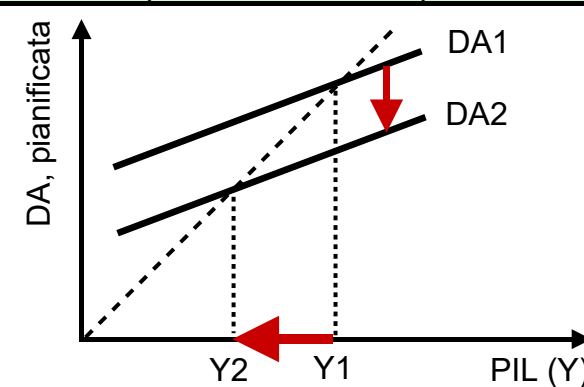
### 21 Mercato monetario



### 22 Investimenti



### 23 DA (= C+I+G+X-M)



C = Spesa per consumi / I = Spesa per investimenti / G = Spesa pubblica / X-M = Esportazioni nette // PIL = Prodotto interno lordo